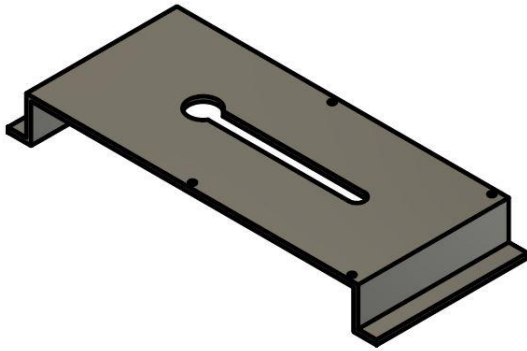


## FT600HW: Inbouw hulpstuk holle wand voor FT600(SIP)/FT600K(SIP)

---



FT600HW

### 1. Product description

The FT600(SIP)/FT600K(SIP) door phones come standard with a black aluminium frame (FT600BUS) that allows you to choose between surface-mount or surface-mounted during installation. If you want to integrate the door phone into a hollow wall (e.g. gyproc or mdf) or fence style, you need the FT600HW. This makes it very easy to integrate the door phone into such an opening. Rear access is not required.

### 1. Installation

Attach the door phone with the 4 supplied long screws (60mm) to the attachment. Let the screws just not pass the 3mm thick stainless steel plate so that the attachment is attached to the door phone as loosely as possible. This is especially important for thick material (e.g. Gyproc)

Then mount the whole in the hollow wall and tighten the 4 screws. As a result, the attachment clamps the door phone.

### 1. Technical data

**Material:** RVS

